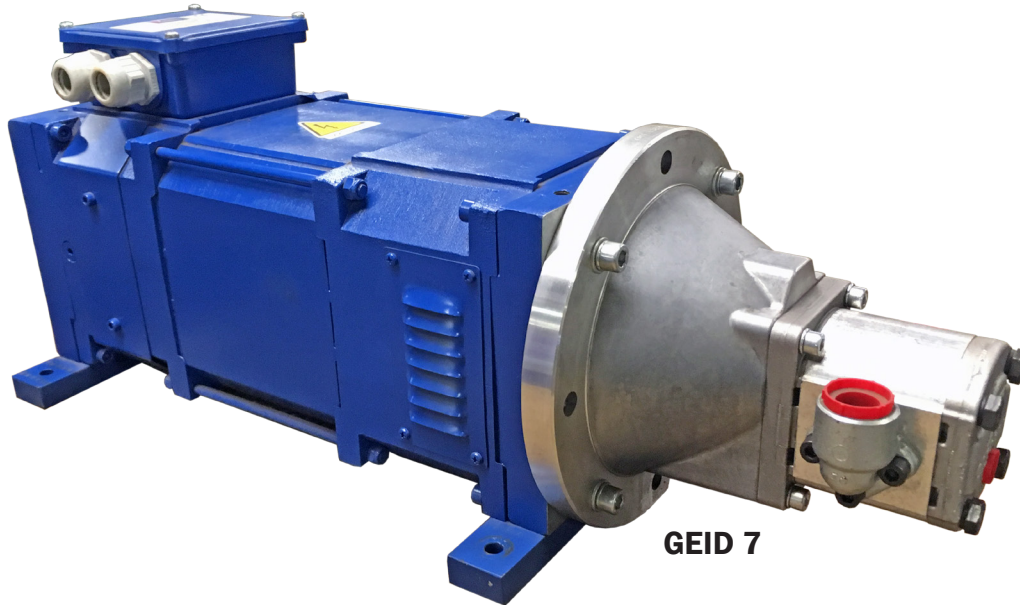


## Moley GEID Hydraulic DC Generator Systems

The compact design allows them to be placed in confined spaces.

Our GEID Hydraulic Generator Systems are available with 12V or 24V control voltage. This proven technology is compact, consistent and reliable. DC Generators feature long-lives and are rewindable. Available in belt-driven as well.



GEID 7

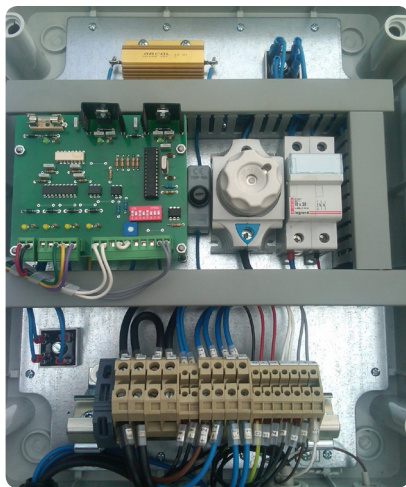
| TYPE    | POWER KW | VDC | MAX AMPS | BATTERY VOLTAGE | RPM  | MOTOR TYPE   | G/ MINUTE | MIN PSI | MAX PSI | MAX POWER KW |
|---------|----------|-----|----------|-----------------|------|--------------|-----------|---------|---------|--------------|
| GEID 5  | 5        | 230 | 22       | 12 or 24        | 2600 | Gear         | 9.5       | 465     | 1,861   | 4.5          |
| GEID 7  | 7        | 230 | 32       | 12 or 24        | 2600 | Gear         | 11.4      | 465     | 2,171   | 6.5          |
| GEID 8  | 8        | 230 | 46       | 12 or 24        | 2500 | Gear         | 15.3      | 465     | 2,248   | 7.5          |
| GEID 12 | 12       | 230 | 54       | 12 or 24        | 2500 | Gear         | 18.2      | 465     | 2,326   | 11           |
| GEID 16 | 16       | 230 | 72       | 12 or 24        | 2500 | Axial Piston | 13.7      | 465     | 3,721   | 15           |
| GEID 20 | 20       | 230 | 90       | 12 or 24        | 2500 | Axial Piston | 19.8      | 465     | 3,100   | 19           |
| GEID 25 | 25       | 230 | 113      | 12 or 24        | 2500 | Axial Piston | 19.8      | 465     | 3,721   | 24           |

| TYPE    | LENGTH (IN) | WIDTH (IN) | HEIGHT (IN) | WEIGHT (LBS) |
|---------|-------------|------------|-------------|--------------|
| GEID 5  | 28          | 9          | 12          | 172          |
| GEID 7  | 29          | 9          | 12          | 195          |
| GEID 8  | 33          | 10         | 12          | 244          |
| GEID 12 | 36          | 12         | 13          | 265          |
| GEID 16 | 38          | 12         | 15          | 309          |
| GEID 20 | 44          | 12         | 15          | 441          |
| GEID 25 | 44          | 12         | 15          | 441          |

## Scrap Magnet Control Systems

### Used with GEID Hydraulic Generator Systems

CED Scrap Magnet Control Systems are used with GEID Hydraulic Generator Systems. These control panels are 18 inches wide by 22 inches tall, allowing them to be placed almost anywhere on a machine. These scrap magnet control systems offer low voltage relays which eliminate the need of replacing typical 230V contactors.



| GENERATOR | BATTERY VOLTAGE | CONTROL PANEL |
|-----------|-----------------|---------------|
| GEID 5    | 12 OR 24        | CED 24/16R    |
| GEID 7    | 12 OR 24        | CED 24/16R    |
| GEID 8    | 24              | CED 24/25R    |
| GEID 12   | 24              | CED 24/25R    |
| GEID 16   | 24              | CED 24/25R    |
| GEID 20   | 24              | CED 24/25R    |
| GEID 25   | 24              | CED 24/25R    |